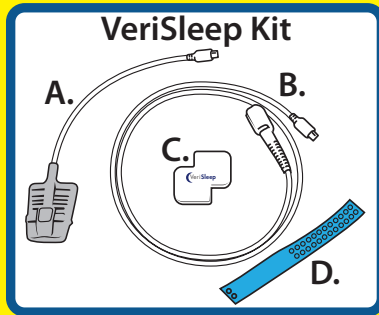


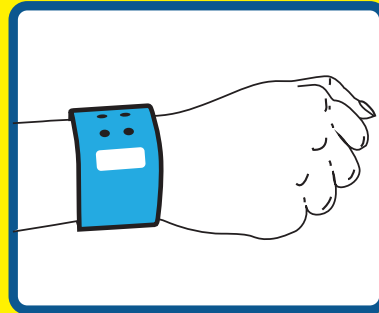


Special Instructions

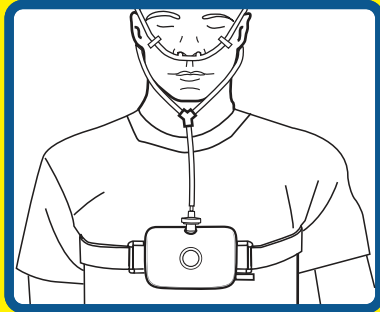
Important! Before you begin testing, you **MUST** first get the Chain of Custody authorized and have the band attached to your wrist.



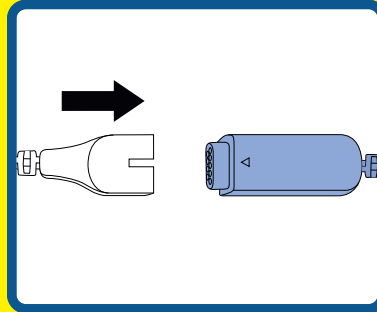
A. Finger sensor C. VeriSleep
B. Cable D. Band with snaps



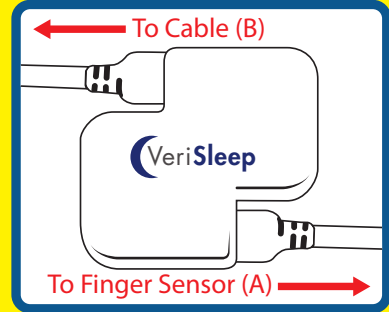
DO NOT CUT THE BAND!
There are wires throughout and if cut, the testing will not work properly



Step 1 Put on your home sleep testing equipment

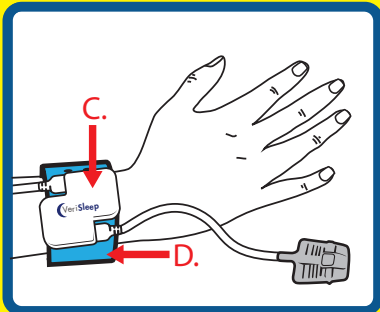


Step 2 Plug the cable (B) into the oximetry port of the home sleep testing equipment

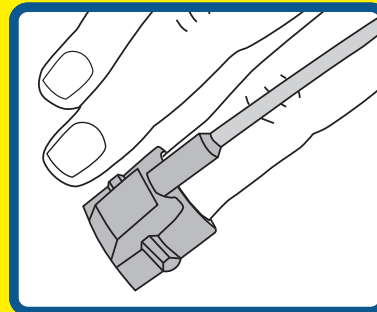


Step 3 Plug the cable (B) and the finger sensor (A) into the VeriSleep device (C)

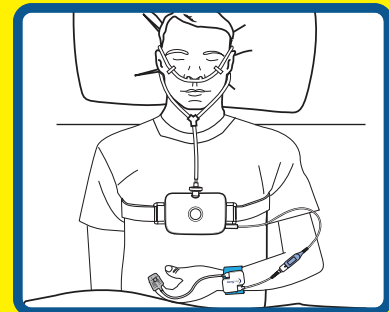
Important! Please remove any nail polish or artificial nail from the finger on which the sensor will be applied



Step 4 Connect/snap the VeriSleep device (C) to the band (D)



Step 5 Place the finger sensor (A) on your finger and turn on the home sleep testing device
Note: There should be a red light **INSIDE** the finger sensor



Step 6 Go to sleep



Once you are finished testing, cut off the band. Place all items, including the signed authorization form into the return package.
* Reference your patient instructions for further information on returning to VirtuOx.

